

Bruce Henderson
Architects
Pty Ltd



162 Toorak Road South Yarra 3141
Telephone:(03)9860 4000
Fax:(03)9866 4321

PRELIMINARY

photomontage - corner rouse & stokes streets



FOR INFORMATION PURPOSES ONLY.
DESIGN SUBJECT TO TOWN PLANNING APPROVAL.

226-242 rouse street, port melbourne

Bruce Henderson
Architects
Pty Ltd

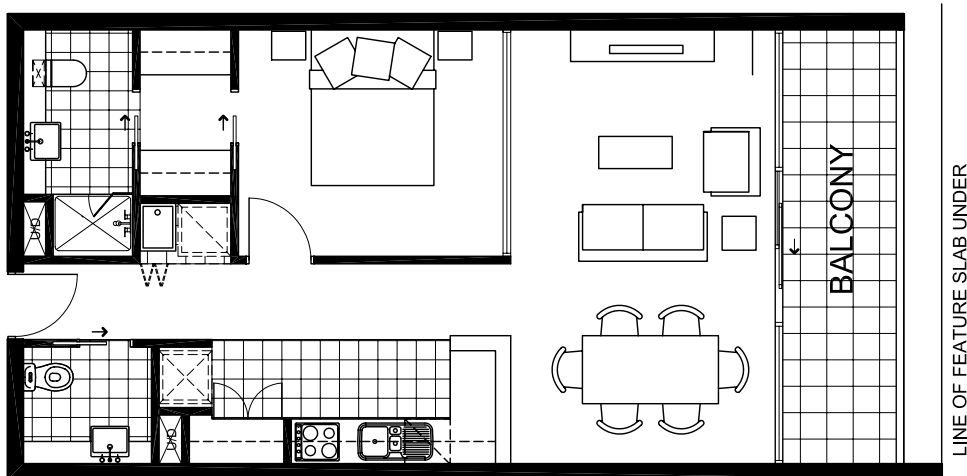


162 Toorak Road South Yarra 3141
Telephone:(03)9860 4000
Fax:(03)9866 4321

1 bedroom apartment (typical)



PRELIMINARY



APARTMENT

AREA - 61.0 sq.m

BALCONY - 9.4 sq.m

FOR INFORMATION PURPOSES ONLY.
DESIGN SUBJECT TO TOWN PLANNING APPROVAL.

226-242 rouse street, port melbourne

SCALE 1:100

16 june 05

Bruce Henderson
Architects
Pty Ltd

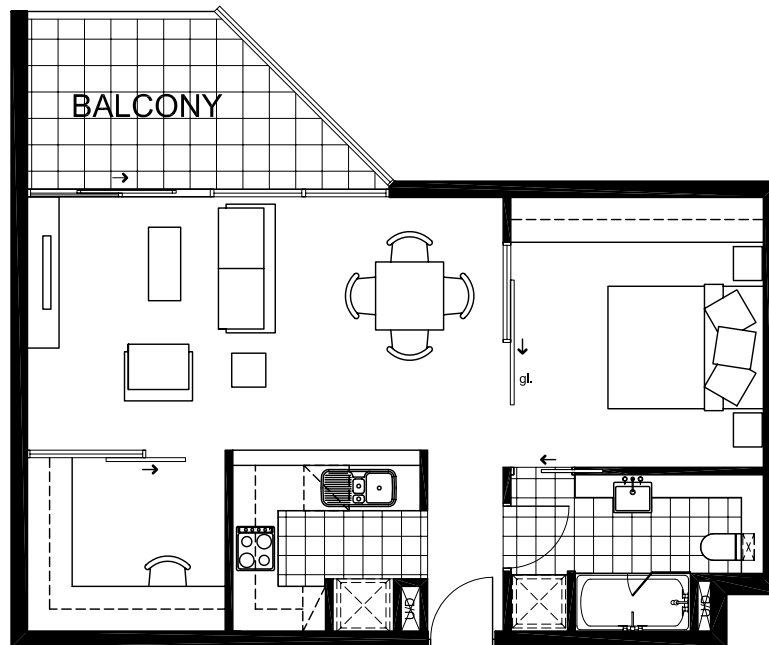


162 Toorak Road South Yarra 3141
Telephone:(03)9860 4000
Fax:(03)9866 4321

1 bedroom + study apartment (typical)



PRELIMINARY



APARTMENT
AREA - 59.6 sq.m
BALCONY - 9.0 sq.m

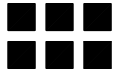
FOR INFORMATION PURPOSES ONLY.
DESIGN SUBJECT TO TOWN PLANNING APPROVAL.

226-242 rouse street, port melbourne

SCALE 1:100

16 june 05

Bruce Henderson
Architects
Pty Ltd

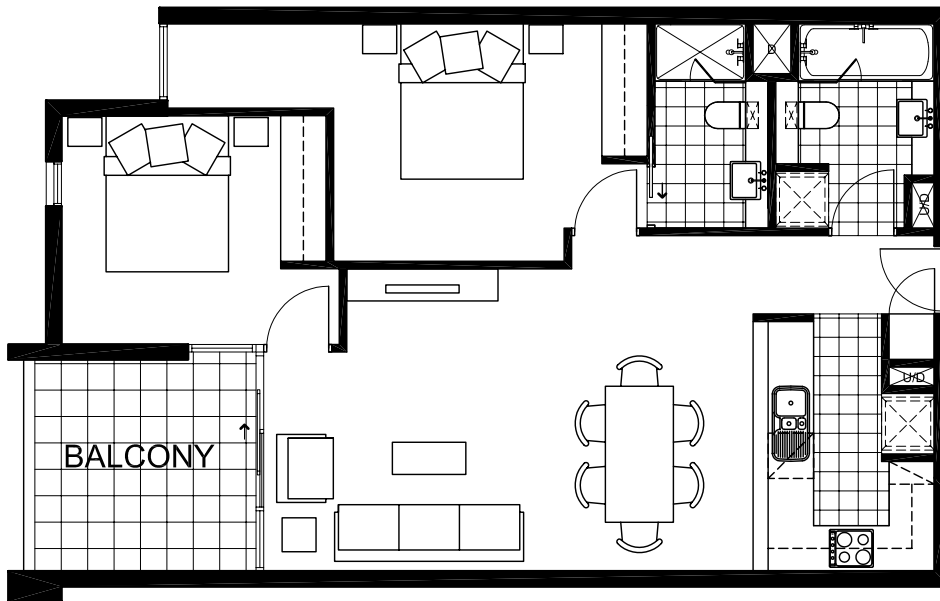


162 Toorak Road South Yarra 3141
Telephone:(03)9860 4000
Fax:(03)9866 4321

2 bedroom apartment (typical)



PRELIMINARY



APARTMENT

AREA - 79.5 sq.m

BALCONY - 8.6 sq.m

FOR INFORMATION PURPOSES ONLY.
DESIGN SUBJECT TO TOWN PLANNING APPROVAL.

226-242 rouse street, port melbourne

SCALE 1:100

16 june 05

Bruce Henderson
Architects
Pty Ltd

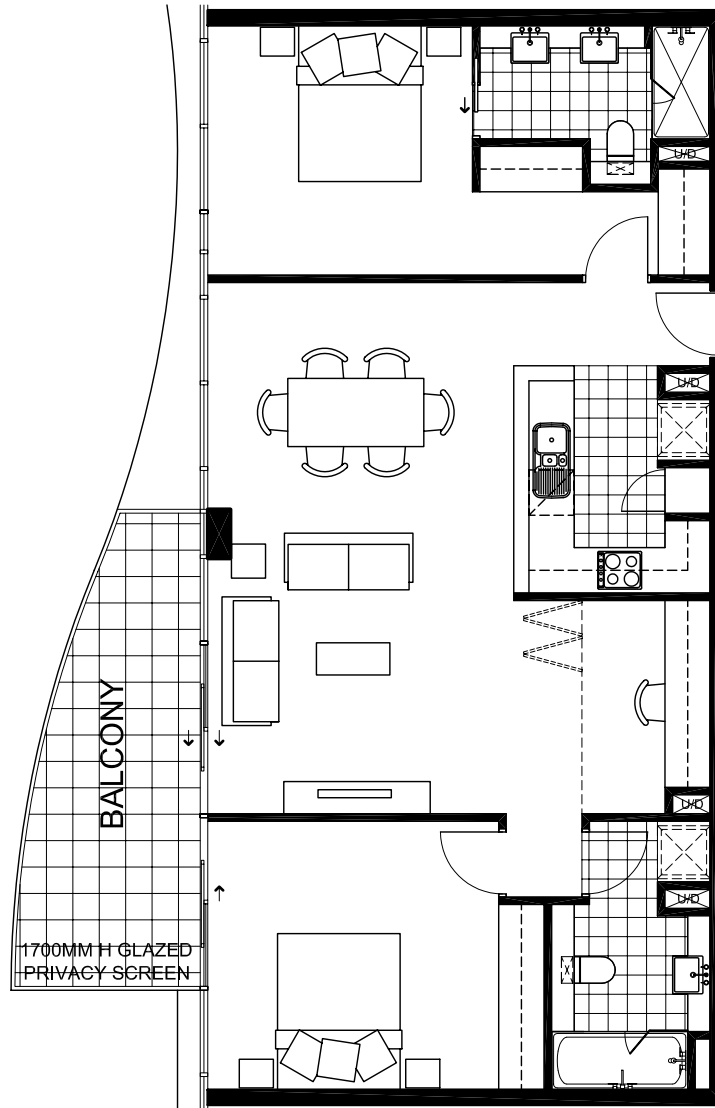


162 Toorak Road South Yarra 3141
Telephone:(03)9860 4000
Fax:(03)9866 4321

2 bedroom + study apartment (typical)



PRELIMINARY



APARTMENT
AREA - 99.2 sq.m
BALCONY - 12.9 sq.m

FOR INFORMATION PURPOSES ONLY.
DESIGN SUBJECT TO TOWN PLANNING APPROVAL.

226-242 rouse street, port melbourne

SCALE 1:100

16 june 05

Bruce Henderson
Architects
Pty Ltd



162 Toorak Road South Yarra 3141
Telephone:(03)9860 4000
Fax:(03)9866 4321

2 bedroom + study apartment (typical)



PRELIMINARY



APARTMENT
AREA - 76.9 sq.m
BALCONY - 33.6 sq.m

FOR INFORMATION PURPOSES ONLY.
DESIGN SUBJECT TO TOWN PLANNING APPROVAL.

226-242 rouse street, port melbourne

SCALE 1:100

16 june 05